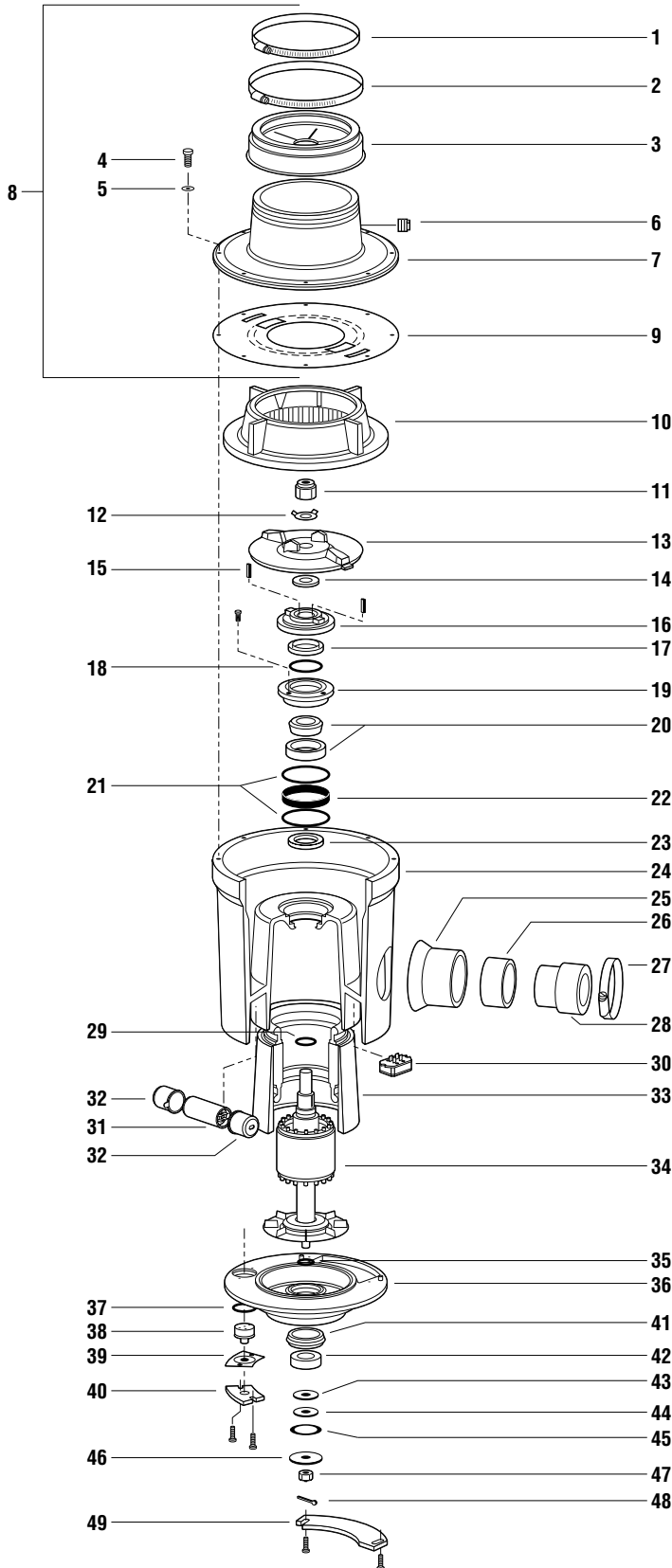


# Salvajor Model 75 3/4 HP - 1 Phase

## Series H Disposer Parts Breakdown



| NO. | PART NO.  | DESCRIPTION                             |
|-----|-----------|---|
| 1   | M116      | Clamp                                   |
| 2   | M128      | Clamp                                   |
| 3   | 2357A     | Hycar Adaptor                           |
| 4   | 997022    | Screw 5/16 - 18 x 1" HHCAP              |
| 5   | 997123    | Washer Flat 11/32 x 5/80D SS            |
| 6   | PL5       | Plug 1/2" Plastic                       |
| 7   | 983010    | Top Housing                             |
| 8   | 980131    | Top Housing Assembly 1, 2, 3, 7, 9      |
| 9   | 996045    | Center Gasket (S)(C)                    |
| 10  | 8S        | Shredder (C)                            |
| 11  | 7814RN    | Rotor Nut (S)(C)                        |
| 12  | 997092    | Lock Washer (S)(C)                      |
| 13  | 983015    | Face Plate (C)                          |
| 14  | 996025    | Rotor Shaft Gasket (S)                  |
| 15  | 997070    | Key 3/16 x 3/16 x 1" (S)                |
| 16  | 980132    | Rotor Base Assembly (S)                 |
| 17  | S67350B   | Varalip Seal (S)                        |
| 18  | 995009    | Spacer Seal TEB (S)                     |
| 19  | 993001    | Top End Bell Insert (S) 17, 18          |
| 20  | 985001    | Bearing Cup/Cone Top (S)                |
| 21  | 12151     | O-Ring (S)                              |
| 22  | ANL79X15S | Tolerance Ring (S)                      |
| 23  | S67350    | Varalip Seal (S)                        |
| 24  | MH3       | Motor Housing 3"                        |
| 25  | 996037    | Drain Outlet 3"                         |
| 26  | 988015    | Drain Insert 3"                         |
| 27  | 997131    | Clamp Disposer 3"                       |
| 28  | 996038    | Drain Adaptor 2-3"                      |
| 29  | 11026     | O-Ring (S)                              |
| 30  | 994071    | Start Switch 1PH                        |
| 31  | 994183    | Capacitor Disposer                      |
| 32  | 994184    | Boot Capacitor                          |
| 33  | 75MHI     | Stator w/Motor Housing Insert           |
| 34  | 991084    | Motor Rotor 75-1                        |
| 35  | 996020    | O-Ring (S)                              |
| 36  | BEBA123G  | Bottom End Bell Assembly 37, 39, 40, 49 |
| 37  | 123       | Klixon O-Ring                           |
| 38  | KL1001    | Klixon                                  |
| 39  | KLCG      | Klixon Cover Gasket                     |
| 40  | KLC       | Klixon Cover                            |
| 41  | 996023    | BEB Rubber Isolator (S)                 |
| 42  | 6205      | Bottom Bearing (S)                      |
| 43  | 987002    | Drive Washer (S)                        |
| 44  | 996024    | Friction Washer (S)                     |
| 45  | 987003    | Wave Washer (S)                         |
| 46  | 987001    | Retaining Washer (S)                    |
| 47  | 997050    | Castle Nut (S)                          |
| 48  | 997051    | Cotter Pin (S)                          |
| 49  | JBCA      | Junction Box Cover                      |

### SEAL AND CUTTING KITS

|        |                        |
|--------|------------------------|
| KSH123 | Seal Kit (All Models)  |
| KCH1   | Cutting Kit (Model 75) |

(S) Designates Parts included in Seal Kit

(C) Designates Parts included in Cutting Kit

SPECIFY VOLTAGE AND PHASE WHEN ORDERING



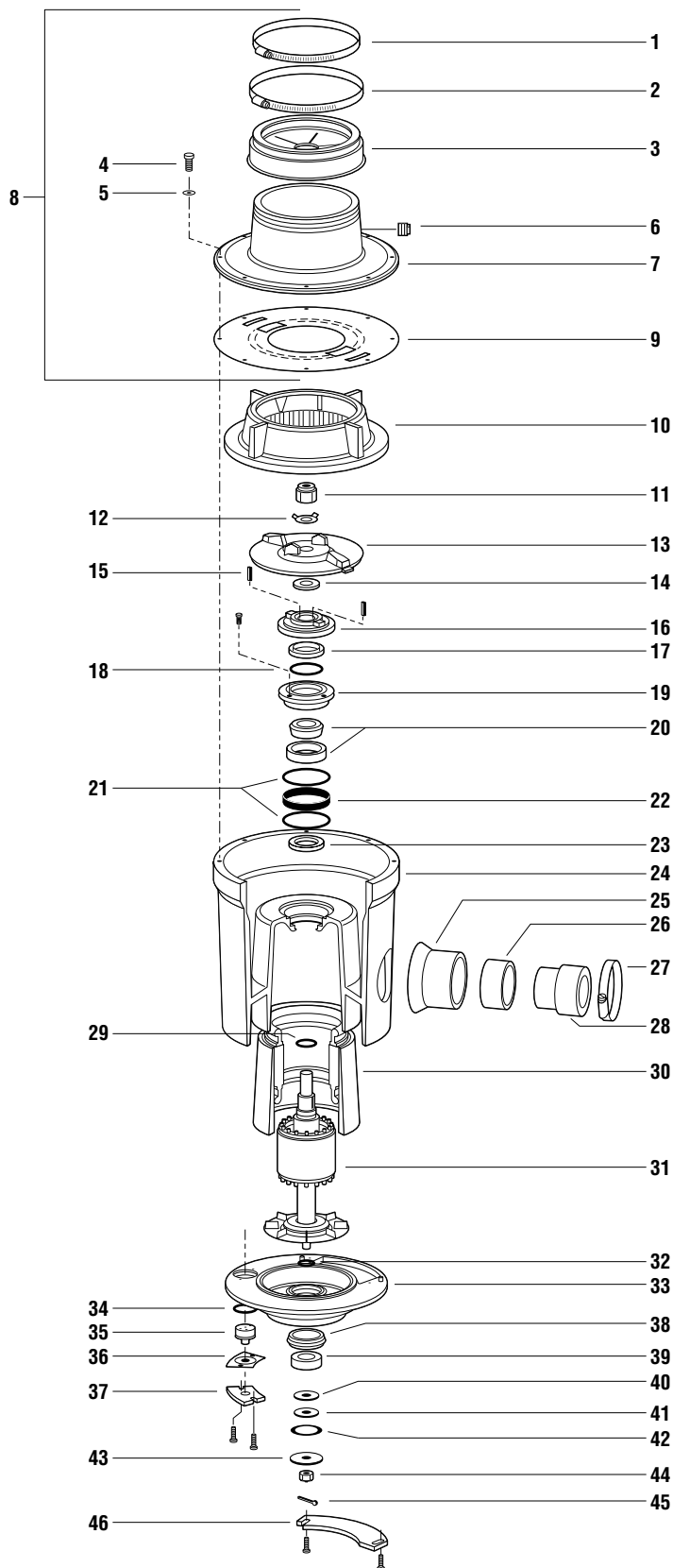
**The Salvajor Company**

4530 East 75th Terrace  
Kansas City, MO 64132-2081 USA

CALL FREE: 1-888-SALVAJOR FAX FREE: 1-800-832-9373

# Salvajor Model 75 3/4 HP - 3 Phase

## Series H Disposer Parts Breakdown



| NO. | PART NO.  | DESCRIPTION                             |
|-----|-----------|---|
| 1   | M116      | Clamp                                   |
| 2   | M128      | Clamp                                   |
| 3   | 2357A     | Hycar Adaptor                           |
| 4   | 997022    | Screw 5/16 - 18 x 1" HHCAP              |
| 5   | 997123    | Washer Flat 11/32 x 5/80D SS            |
| 6   | PL5       | Plug 1/2" Plastic                       |
| 7   | 983010    | Top Housing                             |
| 8   | 980131    | Top Housing Assembly 1, 2, 3, 7, 9      |
| 9   | 996045    | Center Gasket (S)(C)                    |
| 10  | 8S        | Shredder (C)                            |
| 11  | 7814RN    | Rotor Nut (S)(C)                        |
| 12  | 997092    | Lock Washer (S)(C)                      |
| 13  | 983015    | Face Plate (C)                          |
| 14  | 996025    | Rotor Shaft Gasket (S)                  |
| 15  | 997070    | Key 3/16 x 3/16 x 1" (S)                |
| 16  | 980132    | Rotor Base Assembly (S)                 |
| 17  | S67350B   | Varalip Seal (S)                        |
| 18  | 995009    | Spacer Seal TEB (S)                     |
| 19  | 993001    | Top End Bell Insert (S) 17, 18          |
| 20  | 985001    | Bearing Cup/Cone Top (S)                |
| 21  | 12151     | O-Ring (S)                              |
| 22  | ANL79X15S | Tolerance Ring (S)                      |
| 23  | S67350    | Varalip Seal (S)                        |
| 24  | MH3       | Motor Housing 3"                        |
| 25  | 996037    | Drain Outlet 3"                         |
| 26  | 988015    | Drain Insert 3"                         |
| 27  | 997131    | Clamp Disposer 3"                       |
| 28  | 996038    | Drain Adaptor 2-3"                      |
| 29  | 11026     | O-Ring (S)                              |
| 30  | 75MHI     | Stator w/Motor Housing Insert           |
| 31  | 991085    | Motor Rotor 75-3                        |
| 32  | 996020    | O-Ring (S)                              |
| 33  | BEBA123G  | Bottom End Bell Assembly 34, 36, 37, 46 |
| 34  | 123       | Klixon O-Ring                           |
| 35  | KL1003    | Klixon                                  |
| 36  | KLCG      | Klixon Cover Gasket                     |
| 37  | KLC       | Klixon Cover                            |
| 38  | 996023    | BEB Rubber Isolator (S)                 |
| 39  | 6205      | Bottom Bearing (S)                      |
| 40  | 987002    | Drive Washer (S)                        |
| 41  | 996024    | Friction Washer (S)                     |
| 42  | 987003    | Wave Washer (S)                         |
| 43  | 987001    | Retaining Washer (S)                    |
| 44  | 997050    | Castle Nut (S)                          |
| 45  | 997051    | Cotter Pin (S)                          |
| 46  | JBCA      | Junction Box Cover                      |

### SEAL AND CUTTING KITS

|  |                        |
|--|------------------------|
| KSH123                                       | Seal Kit (All Models)  |
| KCH1   | Cutting Kit (Model 75) |
| (S) Designates Parts included in Seal Kit    |                        |
| (C) Designates Parts included in Cutting Kit |                        |

SPECIFY VOLTAGE AND PHASE WHEN ORDERING



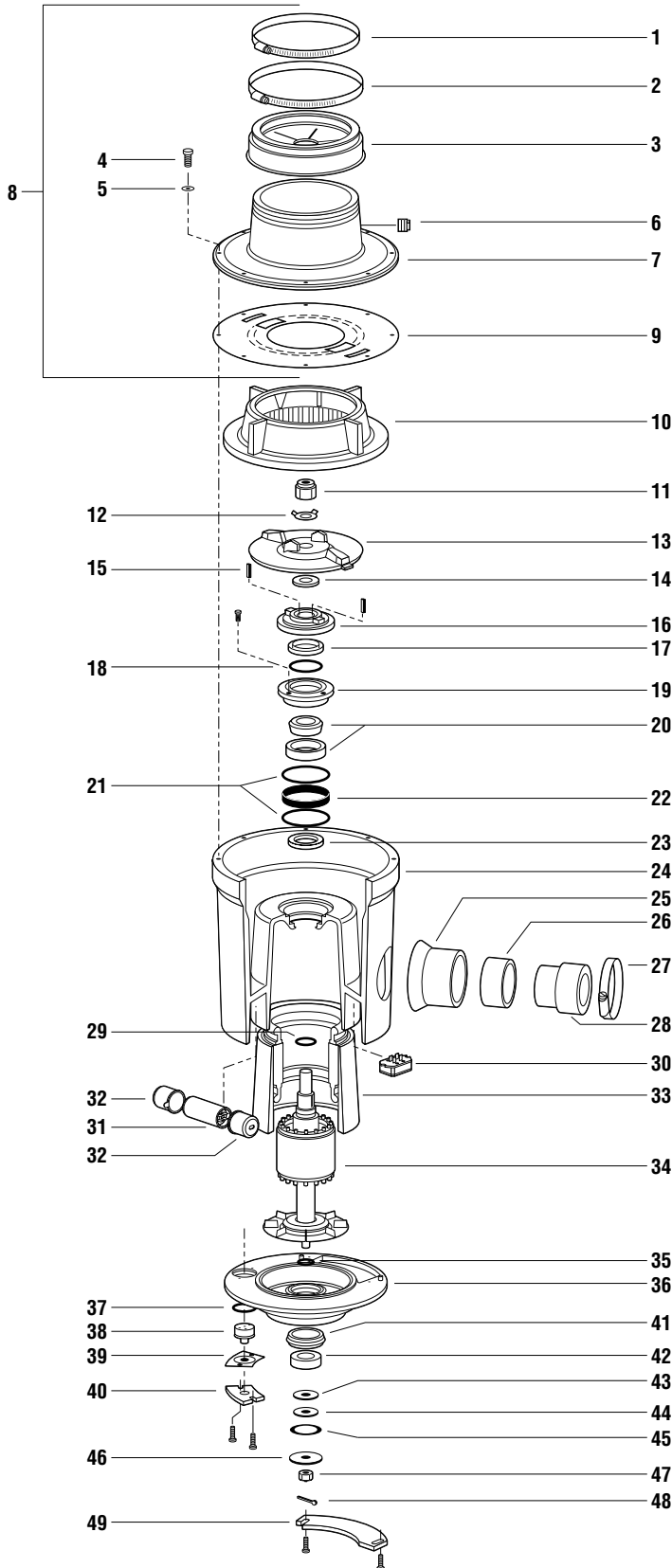
**The Salvajor Company**

4530 East 75th Terrace  
Kansas City, MO 64132-2081 USA

CALL FREE: 1-888-SALVAJOR FAX FREE: 1-800-832-9373

# Salvajor Model 100 1 HP - 1 Phase

## Series H Disposer Parts Breakdown



| NO. | PART NO.  | DESCRIPTION                             |
|-----|-----------|---|
| 1   | M116      | Clamp                                   |
| 2   | M128      | Clamp                                   |
| 3   | 2357A     | Hycar Adaptor                           |
| 4   | 997022    | Screw 5/16 - 18 x 1" HHCAP              |
| 5   | 997123    | Washer Flat 11/32 x 5/80D SS            |
| 6   | PL5       | Plug 1/2" Plastic                       |
| 7   | 983010    | Top Housing                             |
| 8   | 980131    | Top Housing Assembly 1, 2, 3, 7, 9      |
| 9   | 996045    | Center Gasket (S)(C)                    |
| 10  | 8S        | Shredder (C)                            |
| 11  | 7814RN    | Rotor Nut (S)(C)                        |
| 12  | 997092    | Lock Washer (S)(C)                      |
| 13  | 983015    | Face Plate (C)                          |
| 14  | 996025    | Rotor Shaft Gasket (S)                  |
| 15  | 997070    | Key 3/16 x 3/16 x 1" (S)                |
| 16  | 980132    | Rotor Base Assembly (S)                 |
| 17  | S67350B   | Varalip Seal (S)                        |
| 18  | 995009    | Spacer Seal TEB (S)                     |
| 19  | 993001    | Top End Bell Insert (S) 17, 18          |
| 20  | 985001    | Bearing Cup/Cone Top (S)                |
| 21  | 12151     | O-Ring (S)                              |
| 22  | ANL79X15S | Tolerance Ring (S)                      |
| 23  | S67350    | Varalip Seal (S)                        |
| 24  | MH3       | Motor Housing 3"                        |
| 25  | 996037    | Drain Outlet 3"                         |
| 26  | 988015    | Drain Insert 3"                         |
| 27  | 997131    | Clamp Disposer 3"                       |
| 28  | 996038    | Drain Adaptor 2-3"                      |
| 29  | 11026     | O-Ring (S)                              |
| 30  | 994071    | Start Switch 1PH                        |
| 31  | 994183    | Capacitor Disposer                      |
| 32  | 994184    | Boot Capacitor                          |
| 33  | 1MHI      | Stator w/Motor Housing Insert           |
| 34  | 991010    | Motor Rotor 100-1                       |
| 35  | 996020    | O-Ring (S)                              |
| 36  | BEBA123G  | Bottom End Bell Assembly 37, 39, 40, 49 |
| 37  | 123       | Klixon O-Ring                           |
| 38  | KL1001    | Klixon                                  |
| 39  | KLCG      | Klixon Cover Gasket                     |
| 40  | KLC       | Klixon Cover                            |
| 41  | 996023    | BEB Rubber Isolator (S)                 |
| 42  | 6205      | Bottom Bearing (S)                      |
| 43  | 987002    | Drive Washer (S)                        |
| 44  | 996024    | Friction Washer (S)                     |
| 45  | 987003    | Wave Washer (S)                         |
| 46  | 987001    | Retaining Washer (S)                    |
| 47  | 997050    | Castle Nut (S)                          |
| 48  | 997051    | Cotter Pin (S)                          |
| 49  | JBCA      | Junction Box Cover                      |

### SEAL AND CUTTING KITS

|        |                         |
|--------|-------------------------|
| KSH123 | Seal Kit (All Models)   |
| KCH1   | Cutting Kit (Model 100) |

(S) Designates Parts included in Seal Kit

(C) Designates Parts included in Cutting Kit

SPECIFY VOLTAGE AND PHASE WHEN ORDERING



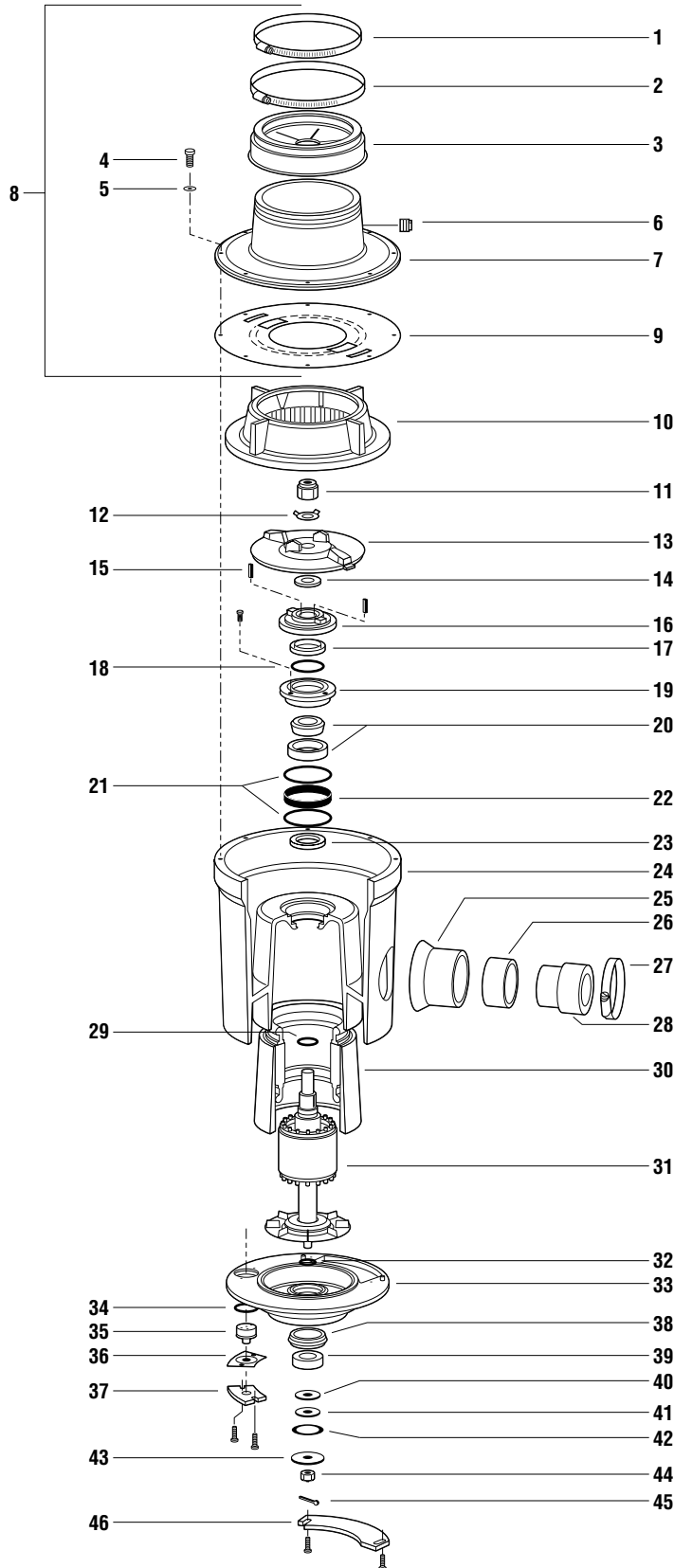
**The Salvajor Company**

4530 East 75th Terrace  
Kansas City, MO 64132-2081 USA

CALL FREE: 1-888-SALVAJOR FAX FREE: 1-800-832-9373

# Salvajor Model 100 1 HP - 3 Phase

## Series H Disposer Parts Breakdown



| NO. | PART NO.  | DESCRIPTION                             |
|-----|-----------|---|
| 1   | M116      | Clamp                                   |
| 2   | M128      | Clamp                                   |
| 3   | 2357A     | Hycar Adaptor                           |
| 4   | 997022    | Screw 5/16 - 18 x 1" HHCAP              |
| 5   | 997123    | Washer Flat 11/32 x 5/80D SS            |
| 6   | PL5       | Plug 1/2" Plastic                       |
| 7   | 983010    | Top Housing                             |
| 8   | 980131    | Top Housing Assembly 1, 2, 3, 7, 9      |
| 9   | 996045    | Center Gasket (S)(C)                    |
| 10  | 8S        | Shredder (C)                            |
| 11  | 7814RN    | Rotor Nut (S)(C)                        |
| 12  | 997092    | Lock Washer (S)(C)                      |
| 13  | 983015    | Face Plate (C)                          |
| 14  | 996025    | Rotor Shaft Gasket (S)                  |
| 15  | 997070    | Key 3/16 x 3/16 x 1" (S)                |
| 16  | 980132    | Rotor Base Assembly (S)                 |
| 17  | S67350B   | Varalip Seal (S)                        |
| 18  | 995009    | Spacer Seal TEB (S)                     |
| 19  | 993001    | Top End Bell Insert (S) 17, 18          |
| 20  | 985001    | Bearing Cup/Cone Top (S)                |
| 21  | 12151     | O-Ring (S)                              |
| 22  | ANL79X15S | Tolerance Ring (S)                      |
| 23  | S67350    | Varalip Seal (S)                        |
| 24  | MH3       | Motor Housing 3"                        |
| 25  | 996037    | Drain Outlet 3"                         |
| 26  | 988015    | Drain Insert 3"                         |
| 27  | 997131    | Clamp Disposer 3"                       |
| 28  | 996038    | Drain Adaptor 2-3"                      |
| 29  | 11026     | O-Ring (S)                              |
| 30  | 1MHI      | Stator w/Motor Housing Insert           |
| 31  | 994014    | Motor Rotor 100-3                       |
| 32  | 996020    | O-Ring (S)                              |
| 33  | BEBA123G  | Bottom End Bell Assembly 34, 36, 37, 46 |
| 34  | 123       | Klixon O-Ring                           |
| 35  | KL1003    | Klixon                                  |
| 36  | KLCG      | Klixon Cover Gasket                     |
| 37  | KLC       | Klixon Cover                            |
| 38  | 996023    | BEB Rubber Isolator (S)                 |
| 39  | 6205      | Bottom Bearing (S)                      |
| 40  | 987002    | Drive Washer (S)                        |
| 41  | 996024    | Friction Washer (S)                     |
| 42  | 987003    | Wave Washer (S)                         |
| 43  | 987001    | Retaining Washer (S)                    |
| 44  | 997050    | Castle Nut (S)                          |
| 45  | 997051    | Cotter Pin (S)                          |
| 46  | JBCA      | Junction Box Cover                      |

### SEAL AND CUTTING KITS

|        |                         |
|--------|-------------------------|
| KSH123 | Seal Kit (All Models)   |
| KCH1   | Cutting Kit (Model 100) |

(S) Designates Parts included in Seal Kit

(C) Designates Parts included in Cutting Kit

**SPECIFY VOLTAGE AND PHASE WHEN ORDERING**



**The Salvajor Company**

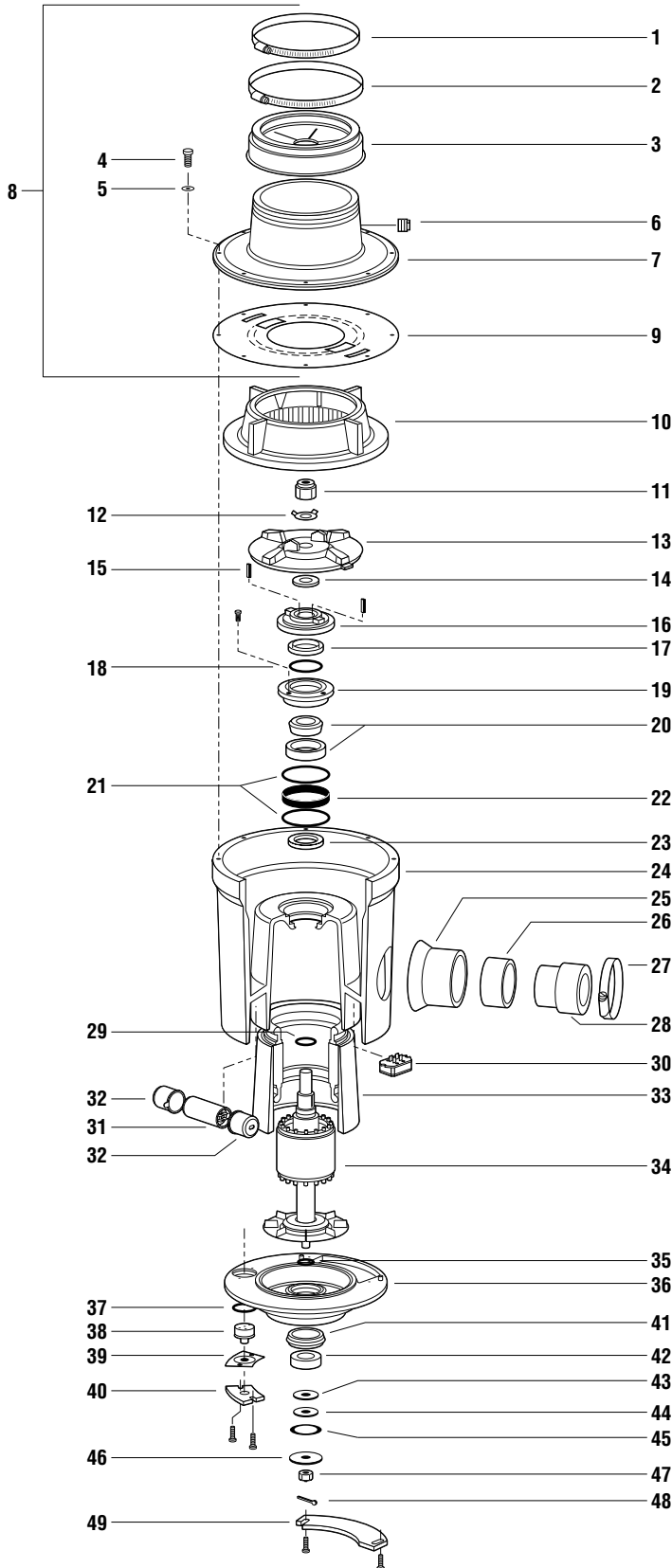
4530 East 75th Terrace

Kansas City, MO 64132-2081 USA

**CALL FREE: 1-888-SALVAJOR FAX FREE: 1-800-832-9373**

# Salvajor Model 150 1½ HP - 1 Phase

## Series H Disposer Parts Breakdown



| NO. | PART NO.  | DESCRIPTION                             |
|-----|-----------|---|
| 1   | M116      | Clamp                                   |
| 2   | M128      | Clamp                                   |
| 3   | 2357A     | Hycar Adaptor                           |
| 4   | 997022    | Screw 5/16 - 18 x 1" HHCAP              |
| 5   | 997123    | Washer Flat 11/32 x 5/80D SS            |
| 6   | PL5       | Plug 1/2" Plastic                       |
| 7   | 983010    | Top Housing                             |
| 8   | 980131    | Top Housing Assembly 1, 2, 3, 7, 9      |
| 9   | 996045    | Center Gasket (S)(C)                    |
| 10  | 8S        | Shredder (C)                            |
| 11  | 7814RN    | Rotor Nut (S)(C)                        |
| 12  | 997092    | Lock Washer (S)(C)                      |
| 13  | 983004    | Face Plate (C)                          |
| 14  | 996025    | Rotor Shaft Gasket (S)                  |
| 15  | 997070    | Key 3/16 x 3/16 x 1" (S)                |
| 16  | 980132    | Rotor Base Assembly (S)                 |
| 17  | S67350B   | Varalip Seal (S)                        |
| 18  | 995009    | Spacer Seal TEB (S)                     |
| 19  | 993001    | Top End Bell Insert (S) 17, 18          |
| 20  | 985001    | Bearing Cup/Cone Top (S)                |
| 21  | 12151     | O-Ring (S)                              |
| 22  | ANL79X15S | Tolerance Ring (S)                      |
| 23  | S67350    | Varalip Seal (S)                        |
| 24  | MH3       | Motor Housing 3"                        |
| 25  | 996037    | Drain Outlet 3"                         |
| 26  | 988015    | Drain Insert 3"                         |
| 27  | 997131    | Clamp Disposer 3"                       |
| 28  | 996038    | Drain Adaptor 2-3"                      |
| 29  | 11026     | O-Ring (S)                              |
| 30  | 994071    | Start Switch 1PH                        |
| 31  | 994183    | Capacitor Disposer                      |
| 32  | 994184    | Boot Capacitor                          |
| 33  | 150MH1    | Stator w/Motor Housing Insert           |
| 34  | 991016    | Motor Rotor 150-1                       |
| 35  | 996020    | O-Ring (S)                              |
| 36  | BEBA123G  | Bottom End Bell Assembly 37, 39, 40, 49 |
| 37  | 123       | Klixon O-Ring                           |
| 38  | KL2001    | Klixon                                  |
| 39  | KLCG      | Klixon Cover Gasket                     |
| 40  | KLC       | Klixon Cover                            |
| 41  | 996023    | BEB Rubber Isolator (S)                 |
| 42  | 6205      | Bottom Bearing (S)                      |
| 43  | 987002    | Drive Washer (S)                        |
| 44  | 996024    | Friction Washer (S)                     |
| 45  | 987003    | Wave Washer (S)                         |
| 46  | 987001    | Retaining Washer (S)                    |
| 47  | 997050    | Castle Nut (S)                          |
| 48  | 997051    | Cotter Pin (S)                          |
| 49  | JBCA      | Junction Box Cover                      |

### SEAL AND CUTTING KITS

|        |                         |
|--------|-------------------------|
| KSH123 | Seal Kit (All Models)   |
| KCGRF2 | Cutting Kit (Model 150) |

(S) Designates Parts included in Seal Kit

(C) Designates Parts included in Cutting Kit

SPECIFY VOLTAGE AND PHASE WHEN ORDERING



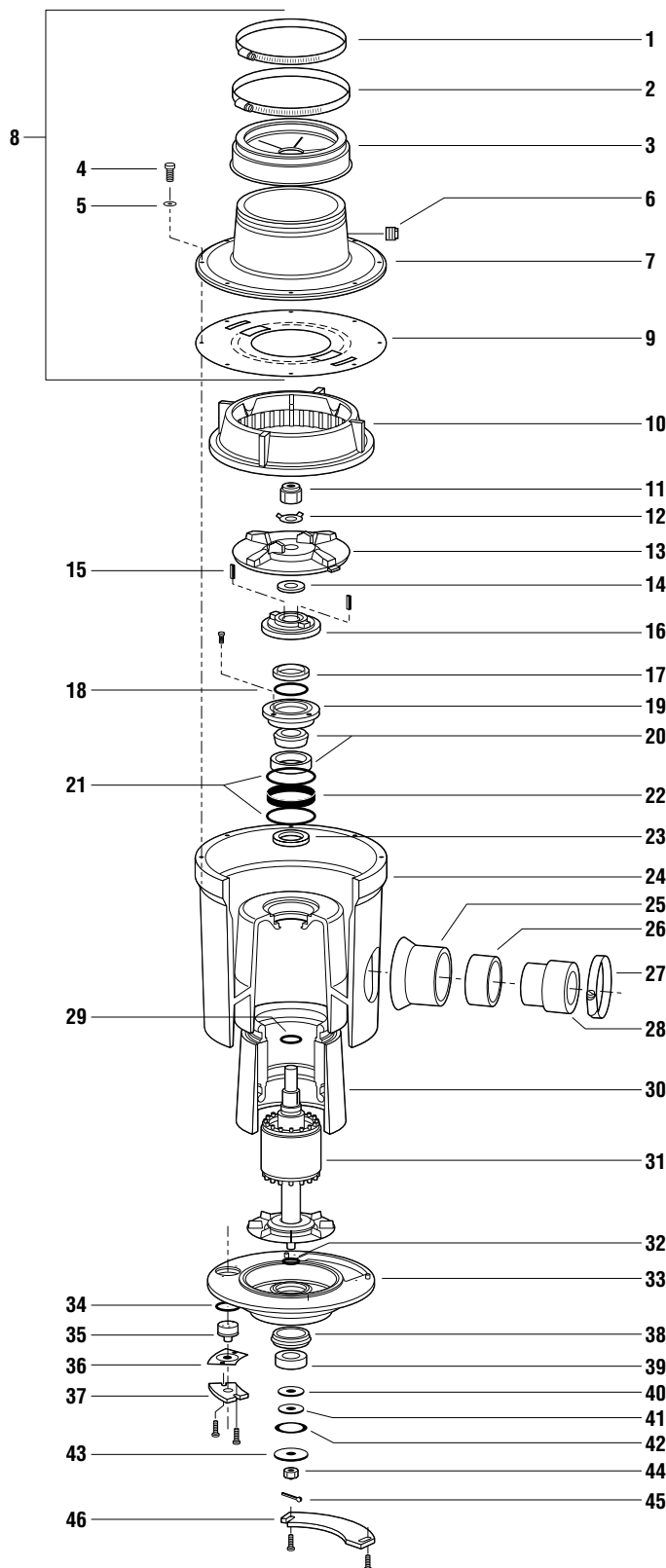
**The Salvajor Company**

4530 East 75th Terrace  
Kansas City, MO 64132-2081 USA

CALL FREE: 1-888-SALVAJOR FAX FREE: 1-800-832-9373

# Salvajor Model 150 1½ HP - 3 Phase

## Series H Disposer Parts Breakdown



| NO. | PART NO.  | DESCRIPTION                             |
|-----|-----------|---|
| 1   | M116      | Clamp                                   |
| 2   | M128      | Clamp                                   |
| 3   | 2357A     | Hycar Adaptor                           |
| 4   | 997022    | (8) Screw 5/16" - 18" x 1" HHCAP        |
| 5   | 997123    | (8) Washer Flat 11/32" x 5/8" OD SS     |
| 6   | PL5       | Plug 1/2" Plastic                       |
| 7   | 983010    | Top Housing                             |
| 8   | 980131    | Top Housing Assembly 1, 2, 3, 7, 9      |
| 9   | 996045    | Center Gasket (S)(C)                    |
| 10  | 8S        | Shredder (C)                            |
| 11  | 7814RN    | Rotor Nut (S)(C)                        |
| 12  | 997092    | Lock Washer (S)(C)                      |
| 13  | 983004    | Face Plate (C)                          |
| 14  | 996025    | Rotor Shaft Gasket (S)                  |
| 15  | 997070    | (2) Key 3/16" x 3/16" x 1" (S)          |
| 16  | 980132    | Rotor Base Assembly (S)                 |
| 17  | S67350B   | Varalip Seal (S)                        |
| 18  | 995009    | Spacer Seal TEB (S)                     |
| 19  | 993001    | Top End Bell Insert (S) 17, 18          |
| 20  | 985001    | Bearing Cup/Cone Top (S)                |
| 21  | 12151     | O-Ring (S)                              |
| 22  | ANL79X15S | Tolerance Ring (S)                      |
| 23  | S67350    | Varalip Seal (S)                        |
| 24  | MH3       | Motor Housing 3"                        |
| 25  | 996037    | Drain Outlet 3"                         |
| 26  | 988015    | Drain Insert 3"                         |
| 27  | 997131    | Clamp Disposer 3"                       |
| 28  | 996038    | Drain Adaptor 2-3"                      |
| 29  | 11026     | O-Ring (S)                              |
| 30  | 150MHI    | Stator w/Motor Housing Insert           |
| 31  | 991018    | Motor Rotor 150-3                       |
| 32  | 996020    | O-Ring (S)                              |
| 33  | BEBA123G  | Bottom End Bell Assembly 34, 36, 37, 46 |
| 34  | 123       | Klixon O-Ring                           |
| 35  | KL2003    | Klixon                                  |
| 36  | KLCG      | Klixon Cover Gasket                     |
| 37  | KLC       | Klixon Cover                            |
| 38  | 996023    | BEB Rubber Isolator (S)                 |
| 39  | 6205      | Bottom Bearing (S)                      |
| 40  | 987002    | Drive Washer (S)                        |
| 41  | 996024    | Friction Washer (S)                     |
| 42  | 987003    | Wave Washer (S)                         |
| 43  | 987001    | Retaining Washer (S)                    |
| 44  | 997050    | Castle Nut (S)                          |
| 45  | 997051    | Cotter Pin (S)                          |
| 46  | JBCA      | Junction Box Cover                      |

### SEAL AND CUTTING KITS

|  |                         |
|--|-------------------------|
| KSH123                                       | Seal Kit (All Models)   |
| KCGRF2                                       | Cutting Kit (Model 150) |
| (S) Designates Parts included in Seal Kit    |                         |
| (C) Designates Parts included in Cutting Kit |                         |

SPECIFY VOLTAGE AND PHASE WHEN ORDERING



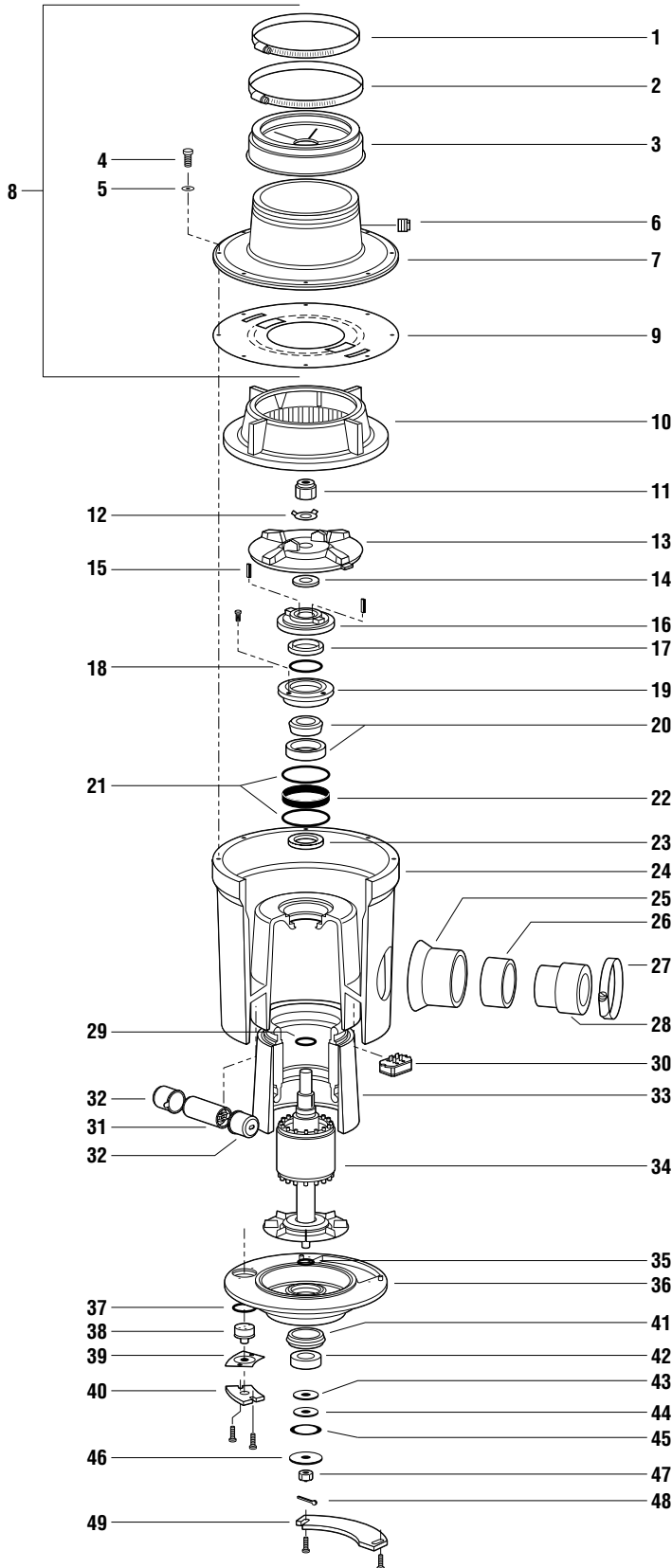
**The Salvajor Company**

4530 East 75th Terrace  
Kansas City, MO 64132-2081 USA

CALL FREE: 1-888-SALVAJOR FAX FREE: 1-800-832-9373

# Salvajor Model 200 2HP - 1 Phase

## Series H Disposer Parts Breakdown



| NO. | PART NO.  | DESCRIPTION                             |
|-----|-----------|---|
| 1   | M116      | Clamp                                   |
| 2   | M128      | Clamp                                   |
| 3   | 2357A     | Hycar Adaptor                           |
| 4   | 997022    | Screw 5/16 - 18 x 1" HHCAP              |
| 5   | 997123    | Washer Flat 11/32 x 5/80D SS            |
| 6   | PL5       | Plug 1/2" Plastic                       |
| 7   | 983010    | Top Housing                             |
| 8   | 980131    | Top Housing Assembly 1, 2, 3, 7, 9      |
| 9   | 996045    | Center Gasket (S)(C)                    |
| 10  | 8S        | Shredder (C)                            |
| 11  | 7814RN    | Rotor Nut (S)(C)                        |
| 12  | 997092    | Lock Washer (S)(C)                      |
| 13  | 983004    | Face Plate (C)                          |
| 14  | 996025    | Rotor Shaft Gasket (S)                  |
| 15  | 997070    | Key 3/16 x 3/16 x 1" (S)                |
| 16  | 980132    | Rotor Base Assembly (S)                 |
| 17  | S67350B   | Varalip Seal (S)                        |
| 18  | 995009    | Spacer Seal TEB (S)                     |
| 19  | 993001    | Top End Bell Insert (S) 17, 18          |
| 20  | 985001    | Bearing Cup/Cone Top (S)                |
| 21  | 12151     | O-Ring (S)                              |
| 22  | ANL79X15S | Tolerance Ring (S)                      |
| 23  | S67350    | Varalip Seal (S)                        |
| 24  | MH3       | Motor Housing 3"                        |
| 25  | 996037    | Drain Outlet 3"                         |
| 26  | 988015    | Drain Insert 3"                         |
| 27  | 997131    | Clamp Disposer 3"                       |
| 28  | 996038    | Drain Adaptor 2-3"                      |
| 29  | 11026     | O-Ring (S)                              |
| 30  | 994071    | Start Switch 1PH                        |
| 31  | 994183    | Capacitor Disposer                      |
| 32  | 994184    | Boot Capacitor                          |
| 33  | 2MHI      | Stator w/Motor Housing Insert           |
| 34  | 991017    | Motor Rotor 200-1                       |
| 35  | 996020    | O-Ring (S)                              |
| 36  | BEBA123G  | Bottom End Bell Assembly 37, 39, 40, 49 |
| 37  | 123       | Klixon O-Ring                           |
| 38  | KL2001    | Klixon                                  |
| 39  | KLCG      | Klixon Cover Gasket                     |
| 40  | KLC       | Klixon Cover                            |
| 41  | 996023    | BEB Rubber Isolator (S)                 |
| 42  | 6205      | Bottom Bearing (S)                      |
| 43  | 987002    | Drive Washer (S)                        |
| 44  | 996024    | Friction Washer (S)                     |
| 45  | 987003    | Wave Washer (S)                         |
| 46  | 987001    | Retaining Washer (S)                    |
| 47  | 997050    | Castle Nut (S)                          |
| 48  | 997051    | Cotter Pin (S)                          |
| 49  | JBCA      | Junction Box Cover                      |

### SEAL AND CUTTING KITS

|        |                         |
|--------|-------------------------|
| KSH123 | Seal Kit (All Models)   |
| KCGRF2 | Cutting Kit (Model 200) |

(S) Designates Parts included in Seal Kit

(C) Designates Parts included in Cutting Kit

SPECIFY VOLTAGE AND PHASE WHEN ORDERING



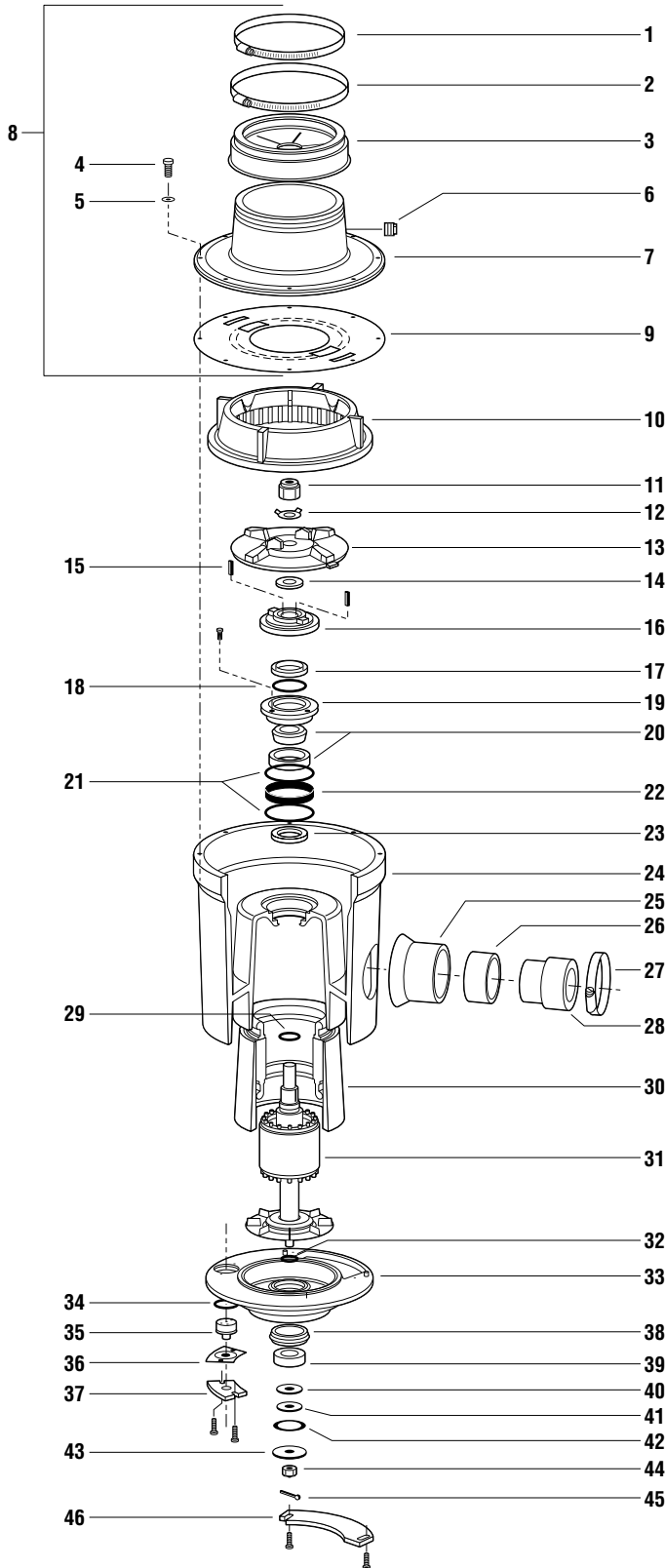
**The Salvajor Company**

4530 East 75th Terrace  
Kansas City, MO 64132-2081 USA

CALL FREE: 1-888-SALVAJOR FAX FREE: 1-800-832-9373

# Salvajor Model 200 2 HP - 3 Phase

## Series H Disposer Parts Breakdown



| NO. | PART NO.  | DESCRIPTION                             |
|-----|-----------|---|
| 1   | M116      | Clamp                                   |
| 2   | M128      | Clamp                                   |
| 3   | 2357A     | Hycar Adaptor                           |
| 4   | 997022    | (8) Screw 5/16" - 18" x 1" HHCAP        |
| 5   | 997123    | (8) Washer Flat 11/32" x 5/8" OD SS     |
| 6   | PL5       | Plug 1/2" Plastic                       |
| 7   | 983010    | Top Housing                             |
| 8   | 980131    | Top Housing Assembly 1, 2, 3, 7, 9      |
| 9   | 996045    | Center Gasket (S)(C)                    |
| 10  | 8S        | Shredder (C)                            |
| 11  | 7814RN    | Rotor Nut (S)(C)                        |
| 12  | 997092    | Lock Washer (S)(C)                      |
| 13  | 983004    | Face Plate (C)                          |
| 14  | 996025    | Rotor Shaft Gasket (S)                  |
| 15  | 997070    | (2) Key 3/16" x 3/16" x 1" (S)          |
| 16  | 980132    | Rotor Base Assembly (S)                 |
| 17  | S67350B   | Varalip Seal (S)                        |
| 18  | 995009    | Spacer Seal TEB (S)                     |
| 19  | 993001    | Top End Bell Insert (S) 17, 18          |
| 20  | 985001    | Bearing Cup/Cone Top (S)                |
| 21  | 12151     | O-Ring (S)                              |
| 22  | ANL79X15S | Tolerance Ring (S)                      |
| 23  | S67350    | Varalip Seal (S)                        |
| 24  | MH3       | Motor Housing 3"                        |
| 25  | 996037    | Drain Outlet 3"                         |
| 26  | 988015    | Drain Insert 3"                         |
| 27  | 997131    | Clamp Disposer 3"                       |
| 28  | 996038    | Drain Adaptor 2-3"                      |
| 29  | 11026     | O-Ring (S)                              |
| 30  | 2MHI      | Stator w/Motor Housing Insert           |
| 31  | 991019    | Motor Rotor 200-3                       |
| 32  | 996020    | O-Ring (S)                              |
| 33  | BEBA123G  | Bottom End Bell Assembly 34, 36, 37, 46 |
| 34  | 123       | Klixon O-Ring                           |
| 35  | KL2003    | Klixon                                  |
| 36  | KLCG      | Klixon Cover Gasket                     |
| 37  | KLC       | Klixon Cover                            |
| 38  | 996023    | BEB Rubber Isolator (S)                 |
| 39  | 6205      | Bottom Bearing (S)                      |
| 40  | 987002    | Drive Washer (S)                        |
| 41  | 996024    | Friction Washer (S)                     |
| 42  | 987003    | Wave Washer (S)                         |
| 43  | 987001    | Retaining Washer (S)                    |
| 44  | 997050    | Castle Nut (S)                          |
| 45  | 997051    | Cotter Pin (S)                          |
| 46  | JBCA      | Junction Box Cover                      |

### SEAL AND CUTTING KITS

|        |                         |
|--------|-------------------------|
| KSH123 | Seal Kit (All Models)   |
| KCGRF2 | Cutting Kit (Model 200) |

(S) Designates Parts included in Seal Kit

(C) Designates Parts included in Cutting Kit

SPECIFY VOLTAGE AND PHASE WHEN ORDERING



**The Salvajor Company**

4530 East 75th Terrace

Kansas City, MO 64132-2081 USA

CALL FREE: 1-888-SALVAJOR FAX FREE: 1-800-832-9373