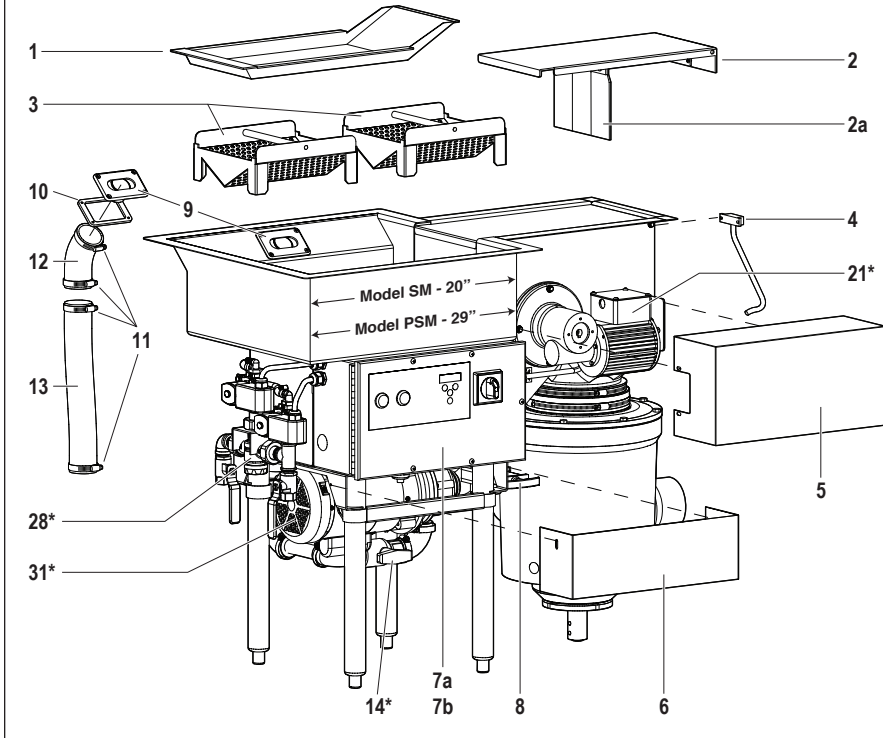


Salvajor ScrapMaster®

PARTS BREAKDOWN for Model SM & PSM

For Serial Numbers
from 3000 to 3827

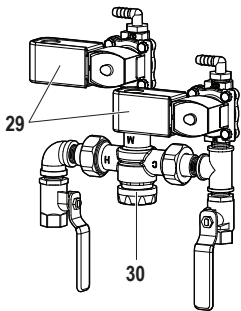
Model SM & PSM System Components



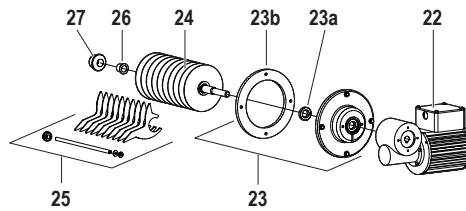
ITEM PART NO. DESCRIPTION

1	980145	Salvage Basin
2	980140	Door Assembly w/Proximity Magnet
2a	SM47X5	Rubber Door Gasket (included with 980140)
3	980085	Screen Assembly (2 pc.)
4	980558	Proximity Switch Retrofit Kit
5	980147	Service Cover
6	982230	Pump Cover
7a	007UL	Control Panel 208-230V 3PH
7b	009UL	Control Panel 460V 3PH
8	998058	Slip Valve
9	980146	Gusher Plate
10	996057	Gusher Plate Gasket
11	M32	Clamp S.S.
12	986053	Recirculation Hose 5"
13	986054	Recirculation Hose 13"
14	980559	Pump Plumbing Assy. (includes 15-20)
15	S24	Clamp S.S.
16	S914PDE	Elbow 3/4 " x 1" Rubber
17	B16	Clamp S.S.
18	982019	Nipple Pump Valve 6"
19	S914PIE	Elbow Rubber 3/4 " x 3/4"
20	75BV	Recirculation Valve
21	980121R	Gearmotor Assy. 208-230/460V 3PH (includes 22-27)
22	981002	Gearmotor 208-230/460V 3PH
23	980060	Separator Cap Assy. (includes 23a-23b)
23a	995007	Seal
23b	SM52G	Gasket
24	980059	Separator Assembly
25	980046	Separator Cleaner Assembly
26	995005	Bearing
27	SM4RBC	Bearing Carrier
28	980139	Water Harness Assembly (includes 29-30)
29	AS824	Valve Solenoid 24V
30	998124	Tempering Valve
31	980077	Pump and Motor Assy. (includes 32-40)
32	980074	Pump Assembly (includes 33-39)
33	988010	Pump Housing
34	997089	Cap Screw
35	996027	Impeller
36	ECK511	Seal Kit
37	996028	O-Ring
38	988009	Pump Base
39	996030	V-Ring
40	991061	Pump Motor 3-Phase
41	982199	Tank Motor Base Bracket (sold separately)
42	15X90QEL	Elbow 1-1/2" x 90 Rubber (sold separately)

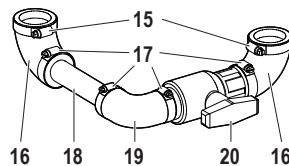
Item #28



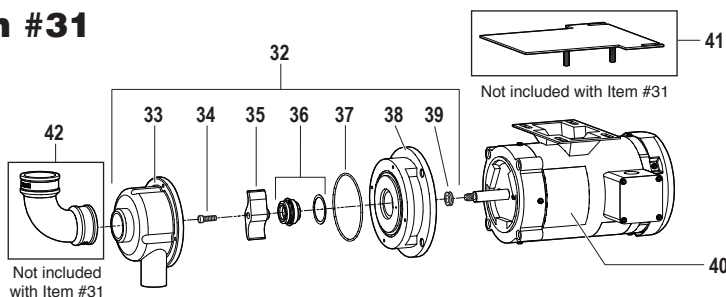
Item #21



Item #14



Item #31



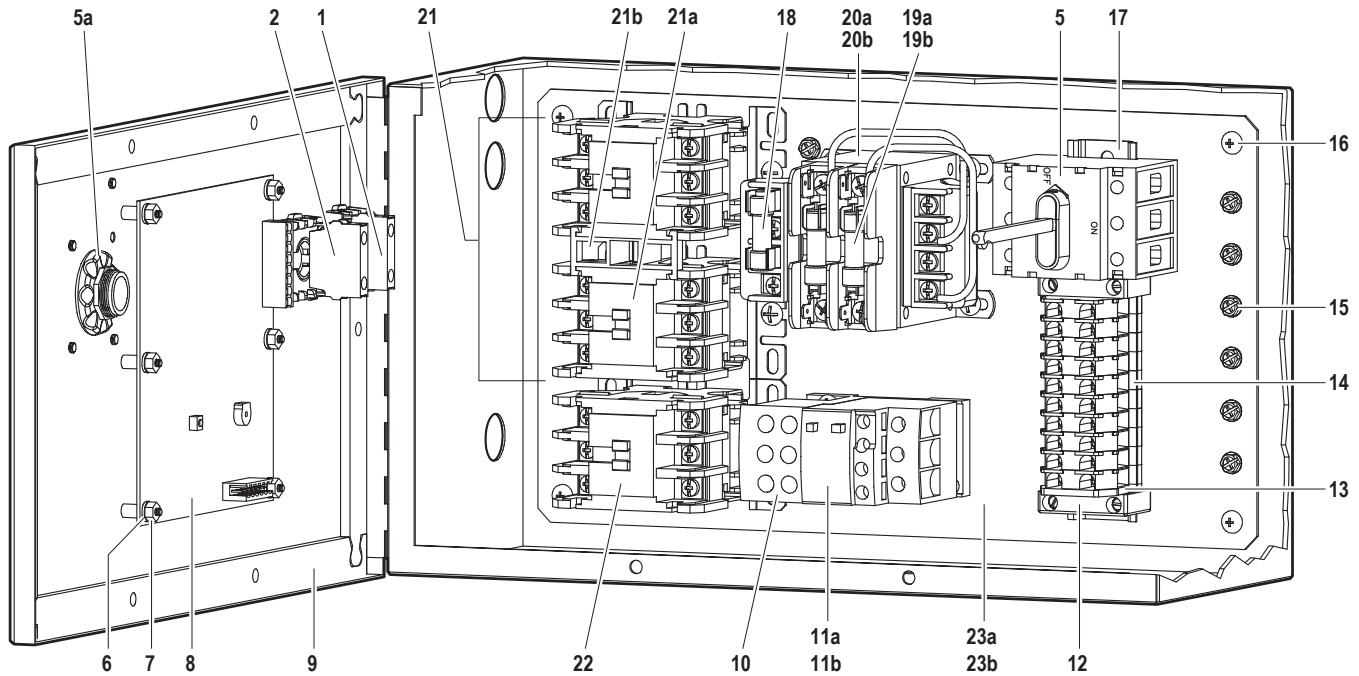
SALVAJOR®

4530 East 75th Terrace Kansas City, MO 64132-2081, USA
Toll Free: 1.888.725.8256 | Fax: 1.800.832.9373
service@salvajor.com | www.salvajor.com

Salvajor ScrapMaster®

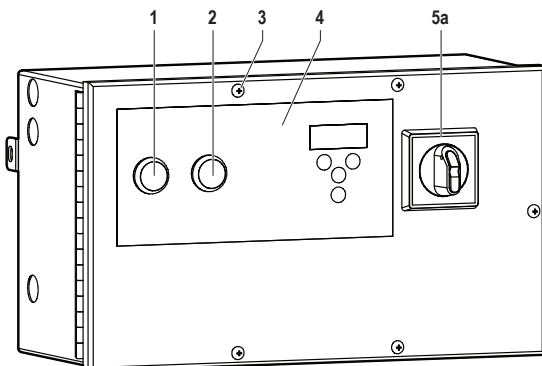
PRE-WIRED CONTROL PANEL PARTS BREAKDOWN

Model SM & PSM Control Components



Item Numbers		
VOLTAGE	PHASE	ITEM NO.
208 or 230	3	007UL
460	3	009UL

Control Box Assembly



ITEM PART NO. DESCRIPTION

1	ABD100B24	Start Button
2	ABD200A	Stop Button
3	997032	Screw 10-32 x 5/8"
4	999235	Control Overlay
5	994177	Line Disconnect Assembly (includes 4a)
5a	984016	Line Disconnect Handle (included with 994177)
6	997161	Flat Washer 6-32
7	997160	Hex Nut 6-32
8	994285	Solid State Control Panel
9	9155GA	Gasket Assembly 9" x 15.5" (4 Pc.)
10	994123	Overload Mounting Base
11a	994291	Overload .33 Amps (for 208-230V 3PH)
11b	994108	Overload .66 Amps (for 460V 3PH)
12	994294	End Block for Terminal Strip
13	994293	End Barrier for Terminal Strip
14	994292	Terminal Block for Terminal Strip
15	SCR1032	Ground Screw 10-32
16	997093	Screw 10-32 x 3/8"
17	994295	Din Rail Mounting Track
18	994101	Secondary Fuse 2 Amp
19a	994095	Fuse 1 Amp (for 208-230V 3PH, 2 required)
19b	994112	Fuse 1/2 Amp (for 460V 3PH, 2 required)
20a	994115a	Transformer 208-230V 3PH (with fuses)
20b	994115b	Transformer 460V 3PH (with fuses)
21	994380	Contact Assembly (includes 21a & 21b)
21a	994174	Contact 24V
21b	994302	Interlock Mechanical
22	994174	Contact 24V
23a	007ULIP	Inner Panel Assy 208-230V 3PH (includes all electrical components)
23b	009ULIP	Inner Panel Assy 460V 3PH (includes all electrical components)

SALVAJOR®

4530 East 75th Terrace Kansas City, MO 64132-2081, USA

Toll Free: 1.888.725.8256 | Fax: 1.800.832.9373

service@salvajor.com | www.salvajor.com